



Contemporary Cladding System INSTALLATION GUIDE.

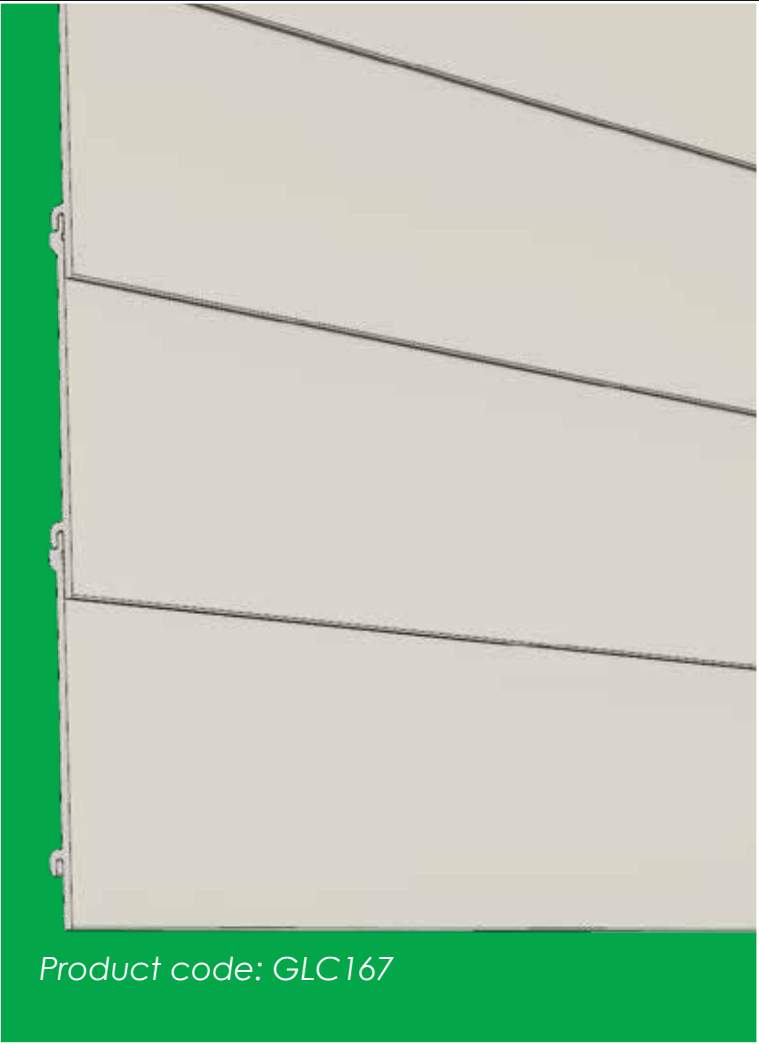
A New Contemporary Cladding System

GAP's new Contemporary Cladding System brings together PVC-U cladding, with a unique and innovative Aluminium trim system which provides a sharp clean finish to any installation.

Lap and Closed V can be used as a standalone product, or look just as good when used together as shown in this guide.



Lap Cladding



Lap Cladding has a coverage of 167mm.

It is available in 5m lengths and comes in packs of 5.

Lap Cladding should only be installed in a horizontal position.

The Cladding should be fixed with Cladding pins every 400mm.

When used with the Aluminium trims 5mm should be allowed for expansion and contraction of the cladding.



Available Colours



Closed V Cladding



Closed V Cladding has a coverage of 110mm .

It is available in 5m lengths and comes in packs of 5.

Closed V Cladding can be installed either horizontally or vertically.

On a vertical installation the cladding should be fixed with cladding pins every 400mm.

On a Horizontal installation the cladding should be fixed with Cladding pins every 300mm.

When used as a soffit the cladding should be fixed with Cladding pins every 300mm.

When used with the Aluminium trims 5mm should be allowed for expansion and contraction of the cladding.



Available Colours



A New Contemporary Cladding System with Aluminium Trims

GAP's new Aluminium trim system provides a sharp clean finish to any installation.

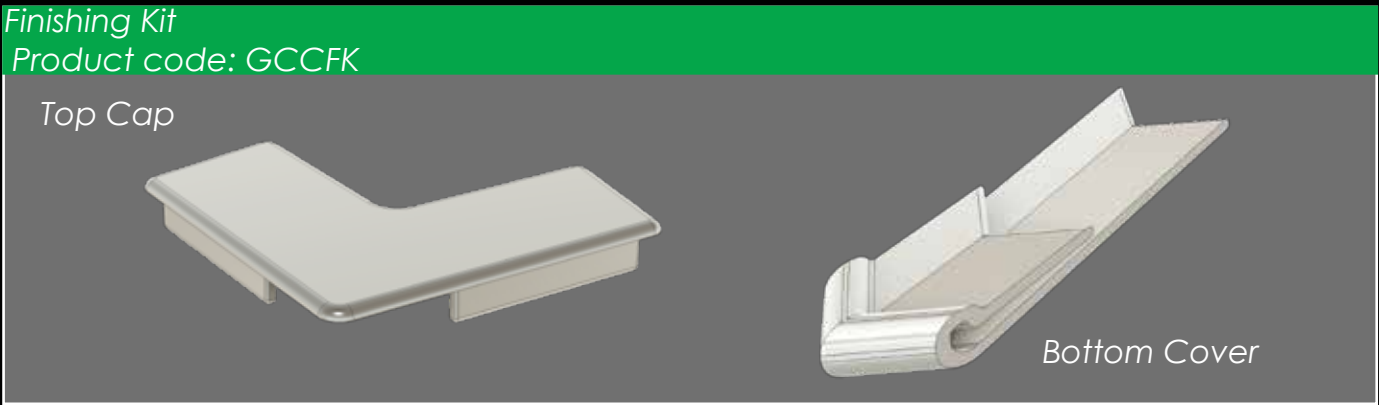
(For illustration purpose all the trims are shown in white)



Aluminium Trims



PVC-U Trims



Available Colours



Inspiration and Installation

Throughout this guide we'll inspire you with different installations and show you how to install the new system to achieve the ultimate finish. When using the PVC-U Cladding and Aluminium trims, please cut using a Chop Saw for a neat finish.

90° Corner Detail - Flat Roof Conservatories or Extension

[page 6](#)

Soffit Installation - Using Cladding Starter Trim

[page 10](#)

Integrating Cladding with Rubbercover Flat Roofs

[page 12](#)

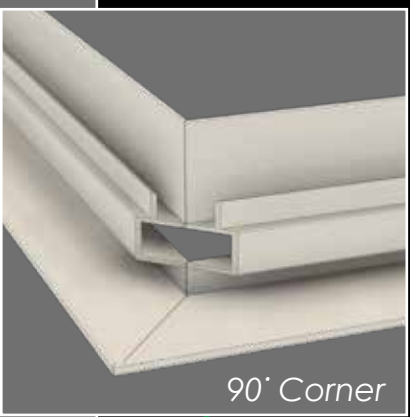
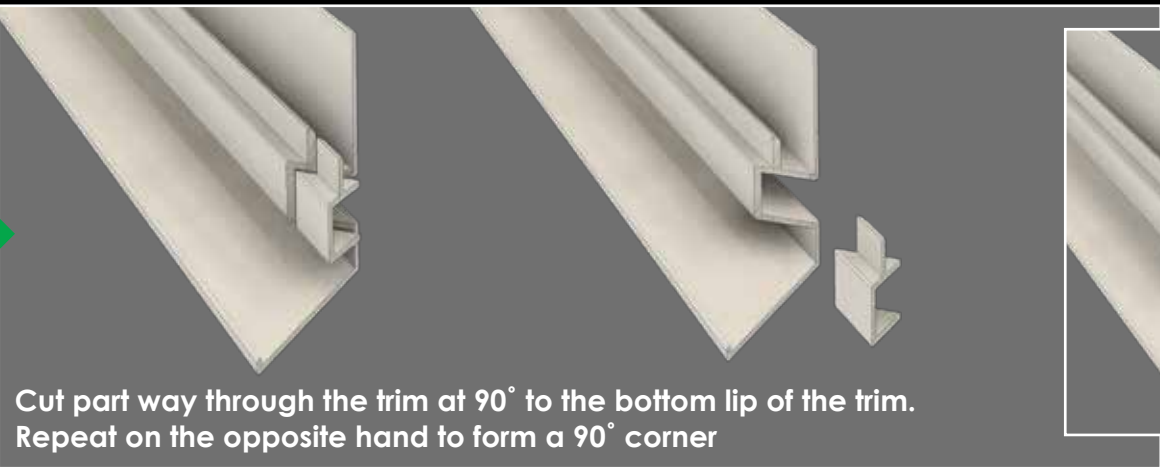
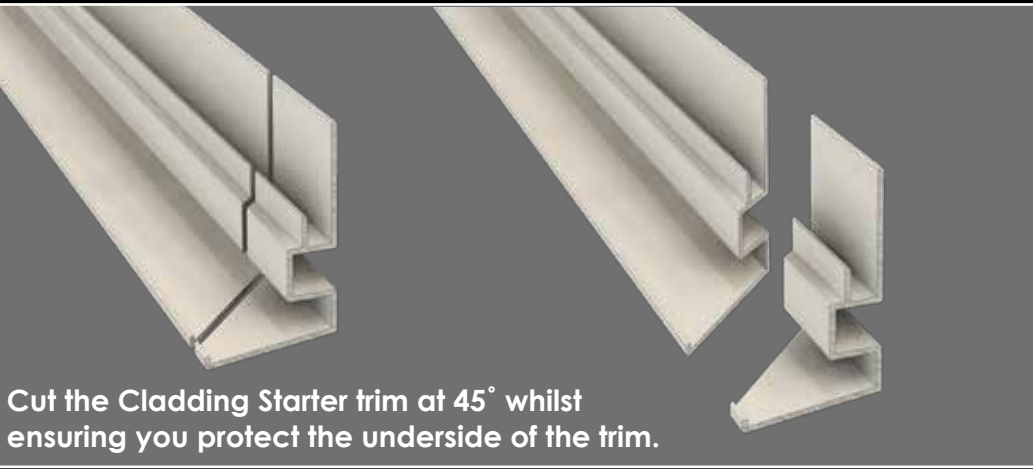
Lap Cladding - Flat Roof Conservatories

Our new PVC-U Cladding and Aluminium trim system offers installers a perfect solution for providing a contemporary finish to close the gap between the top of a bi-fold door installation to the flat roofline edge.

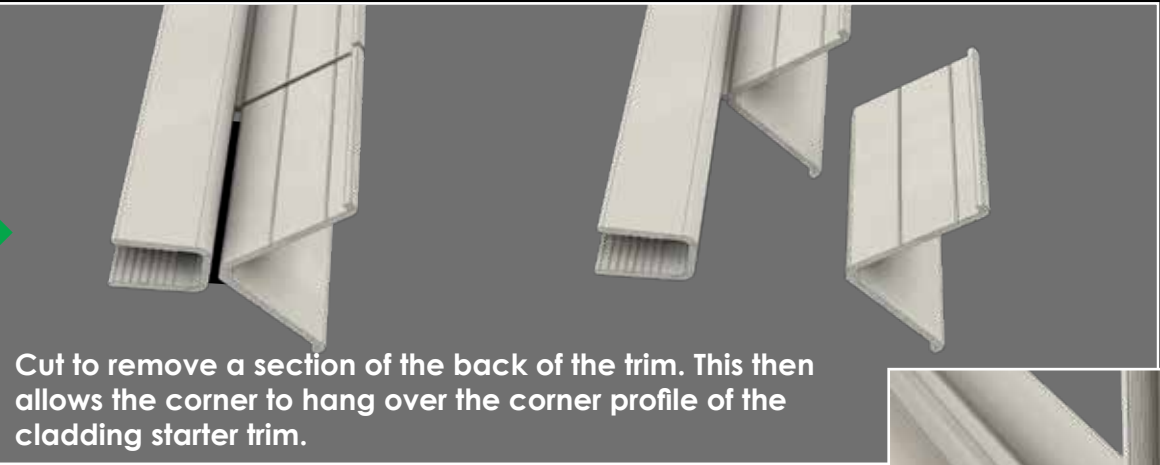
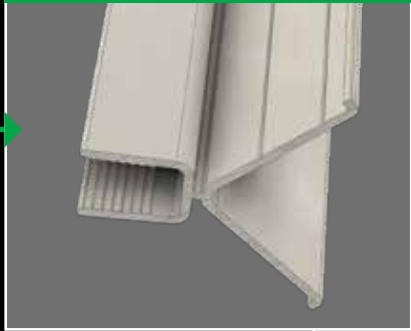


90° Corner Detail (bottom section)

Cladding Starter Trim



2 Part Corner Trim profile A



The 45 degree cuts should be done using a chop saw.

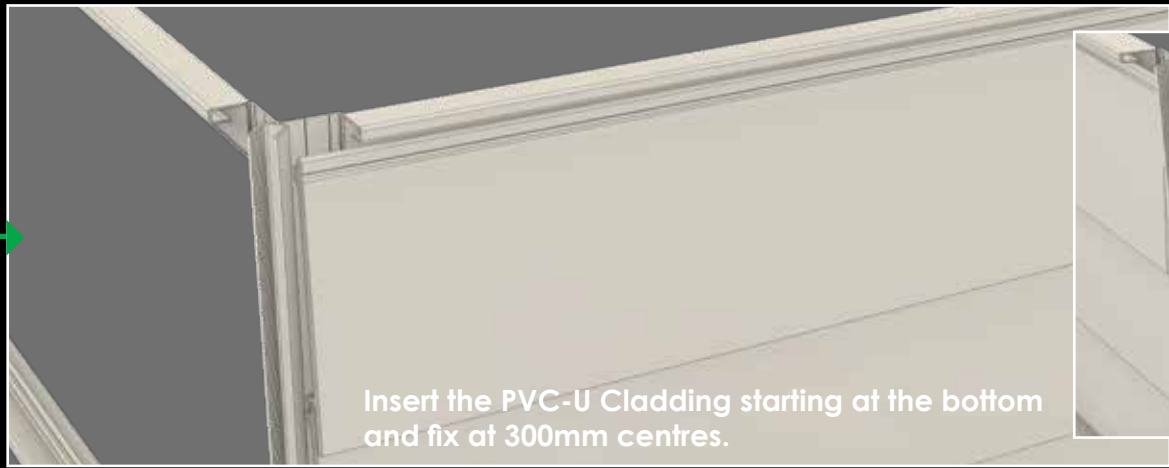
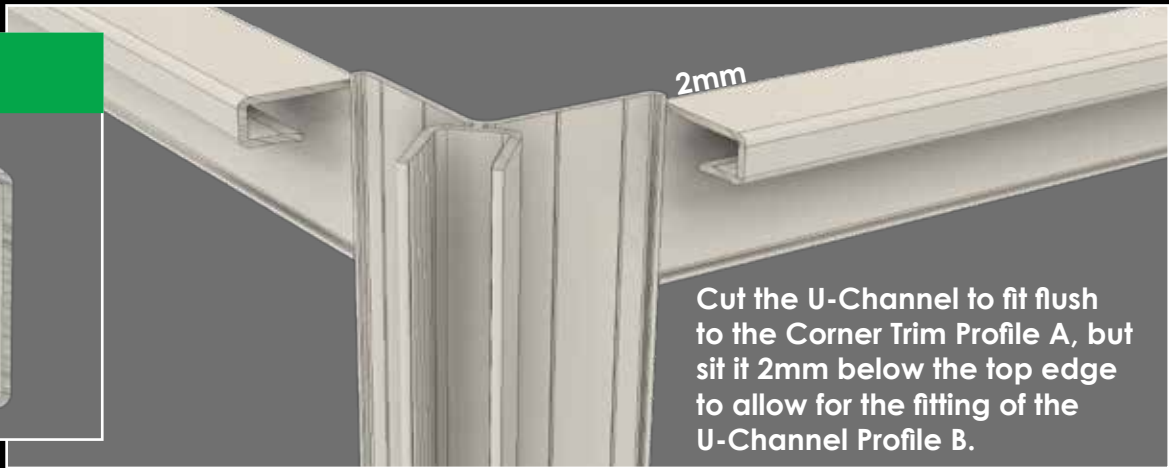
The starter trim should be sat on a packer so that back is vertical. The packer will also protect the underside of the trim as this is the side which is most visible.

Use the Bottom Cover to conceal any slight gap.

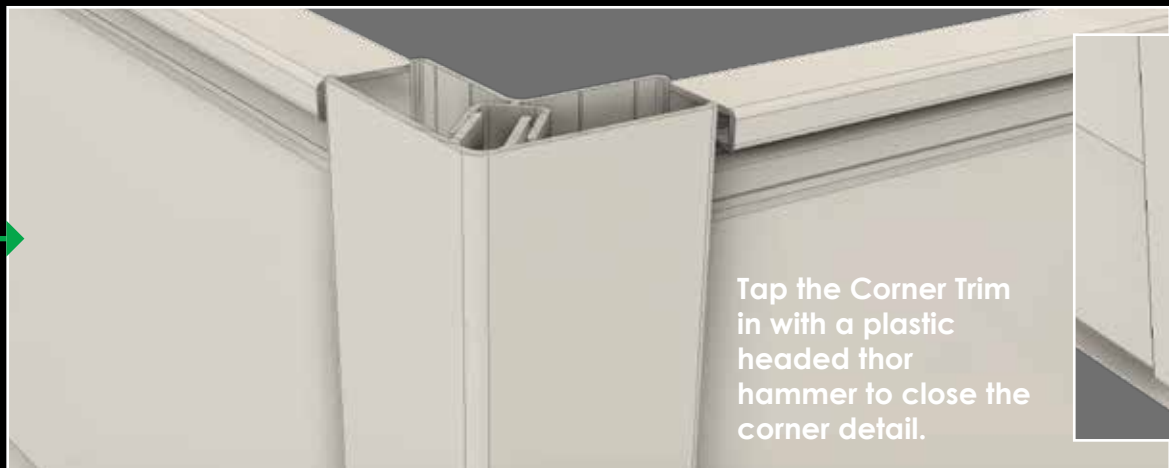
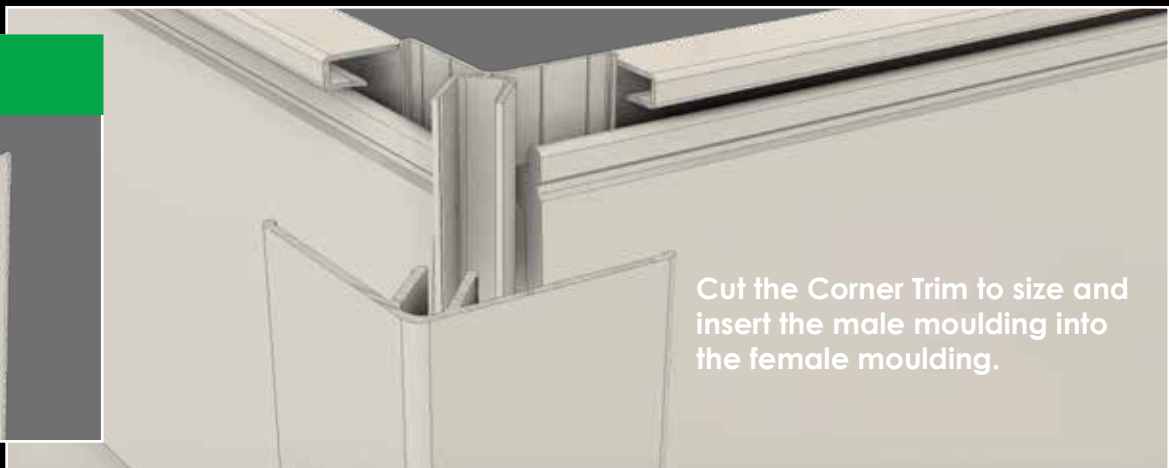


90° Corner Detail (top section)

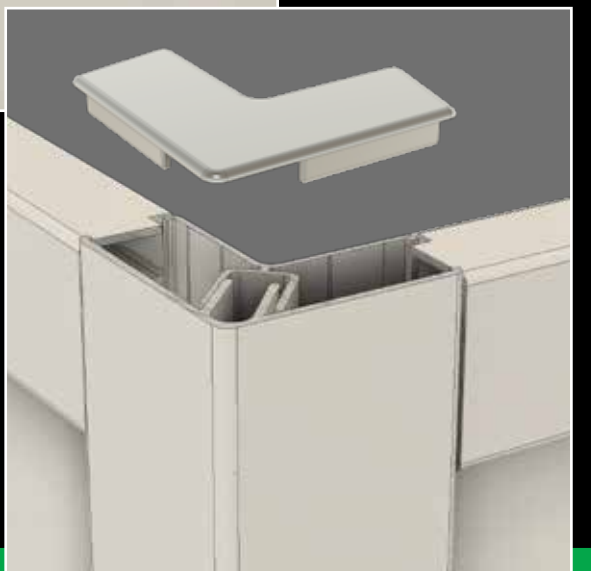
2 Part U-Channel
profile A



2 Part Corner Trim
profile B



2 Part U-Channel
profile B



Soffit Installation using Cladding Starter Trim

The Aluminium Cladding Starter trim features a unique groove at the back edge of the trim that allows for either a 9mm Soffit Board or Closed V Cladding to be used. This ensures the gap between the horizontal cladding and the brick work or wall can be neatly finished.



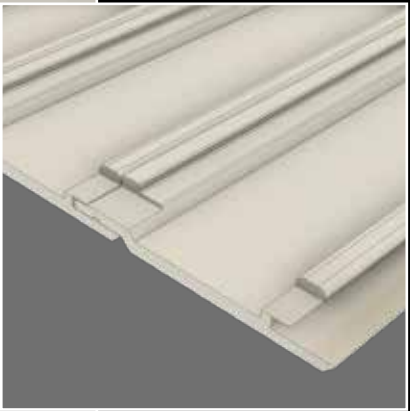
Cladding Starter



The Cladding Starter trim allows for a 9mm Soffit or Closed V Cladding to be inserted into the back edge of the trim as shown here.



Exposed Section



When running the Cladding directly into Cladding Starter Trim side on, the leg and support spacer need notching out to ensure they can be inserted correctly as shown here.

Closed V cladding as a soffit

When using Closed V Cladding as a soffit, it can be run in different ways depending on your fixing requirements.

Cladding all in the same direction

Mitred 2 Part U-Channel



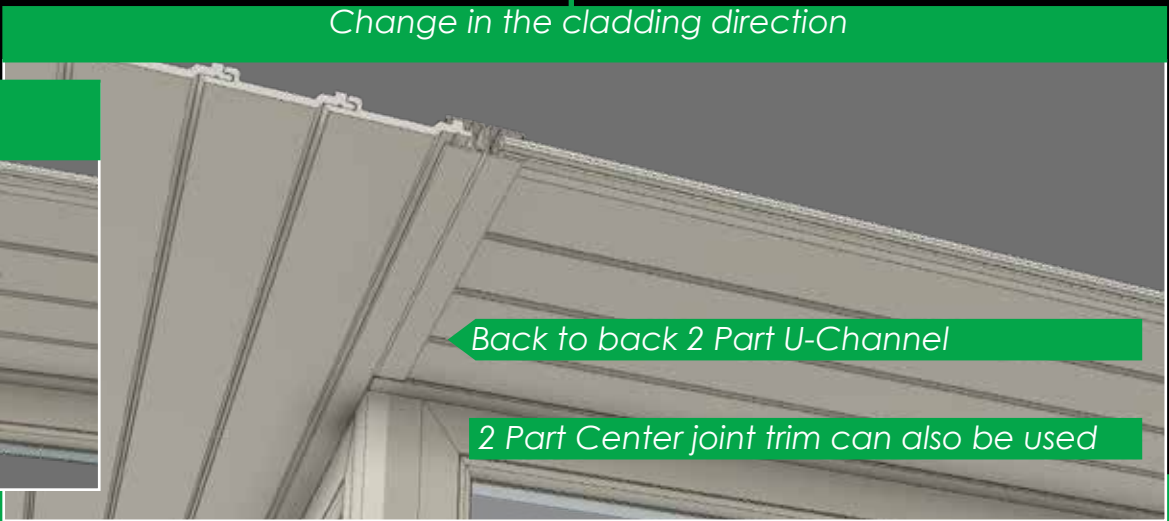
Back to back 2 Part U-Channel



Change in the cladding direction

Back to back 2 Part U-Channel

2 Part Center joint trim can also be used



Intergrating Cladding with Rubbercover Flat Roofs

Here we demonstrate how our new Contemporary Cladding System can be used in conjunction with EPDM Rubbercover on flat roofs that often feature Roof Lanterns or Roof Lights.

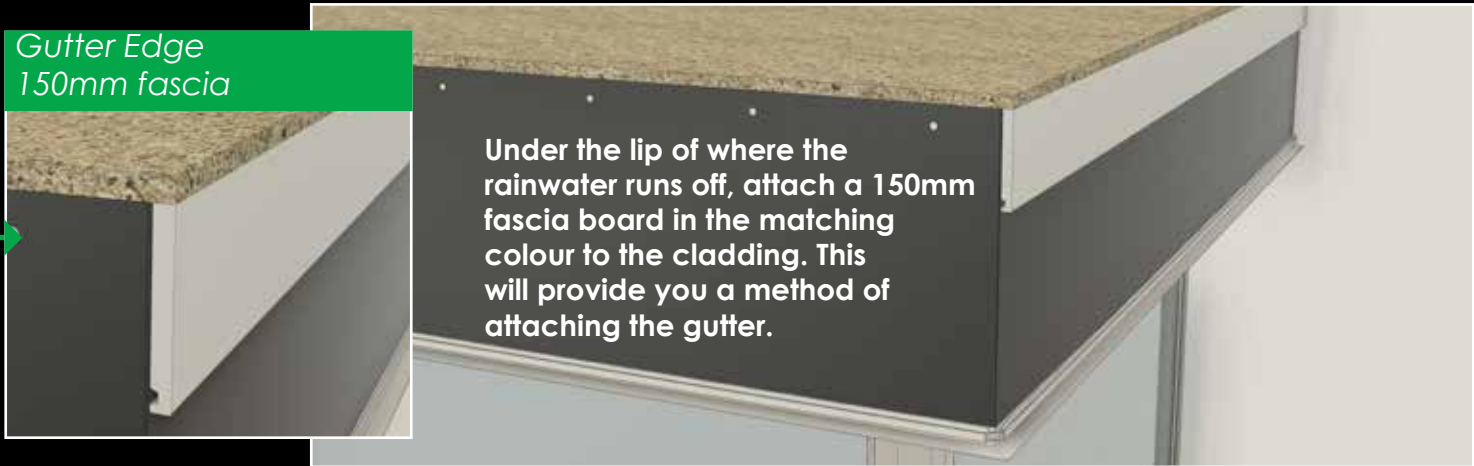
The following instructions are based on a typical installation and is intended as a guideline only. All structural work should be undertaken by qualified installers.



Breathable Membrane



Gutter Edge
150mm fascia



Gutter Edge
Backplate



Rubbercover, Kerb Edge
and Drip Plate

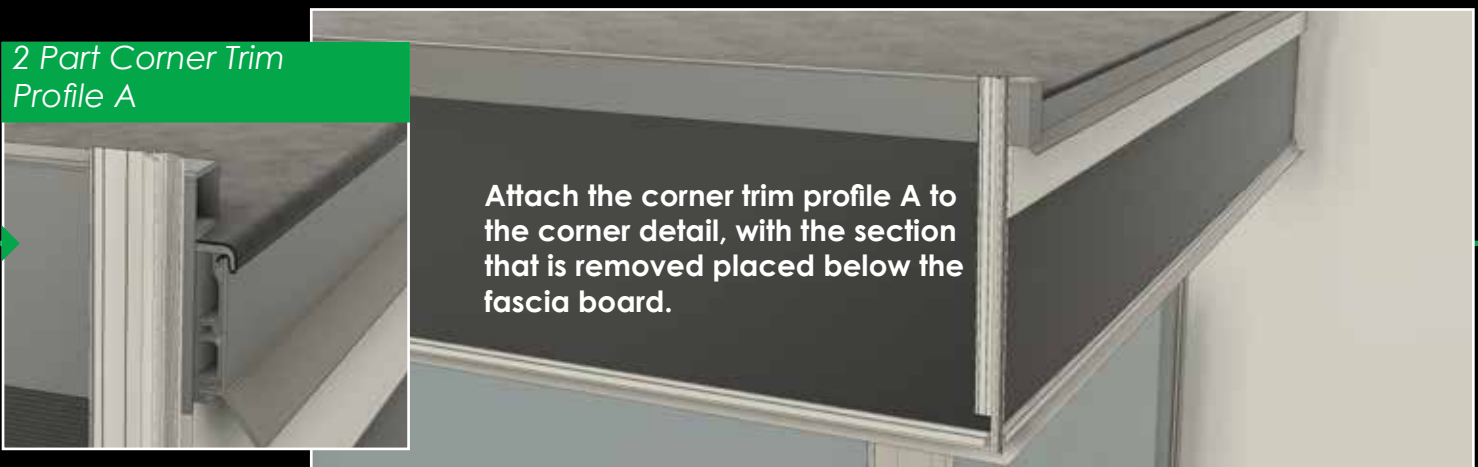
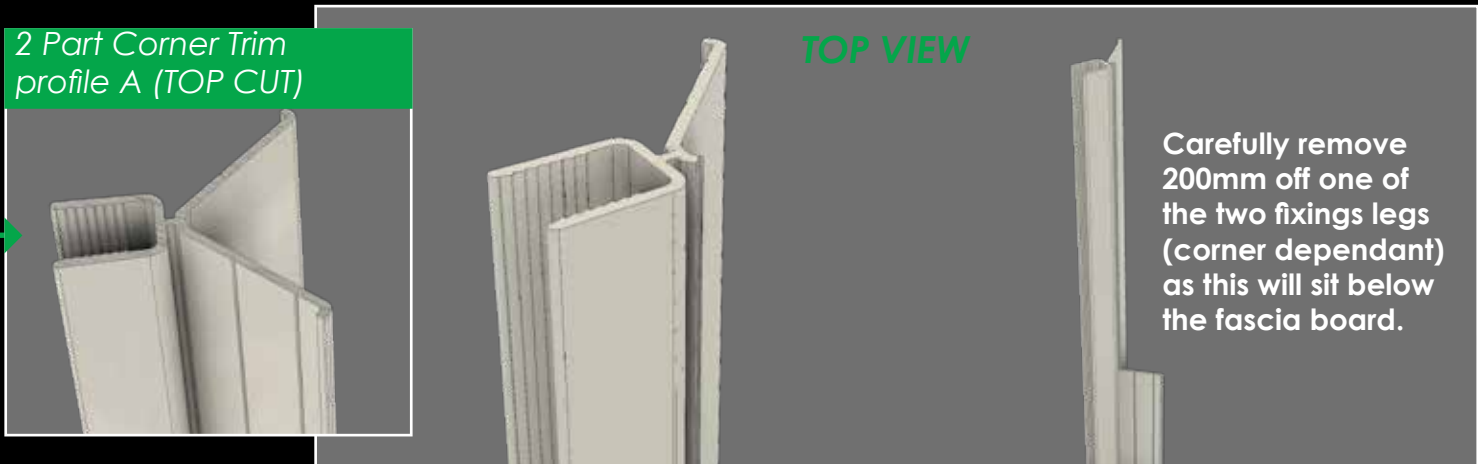
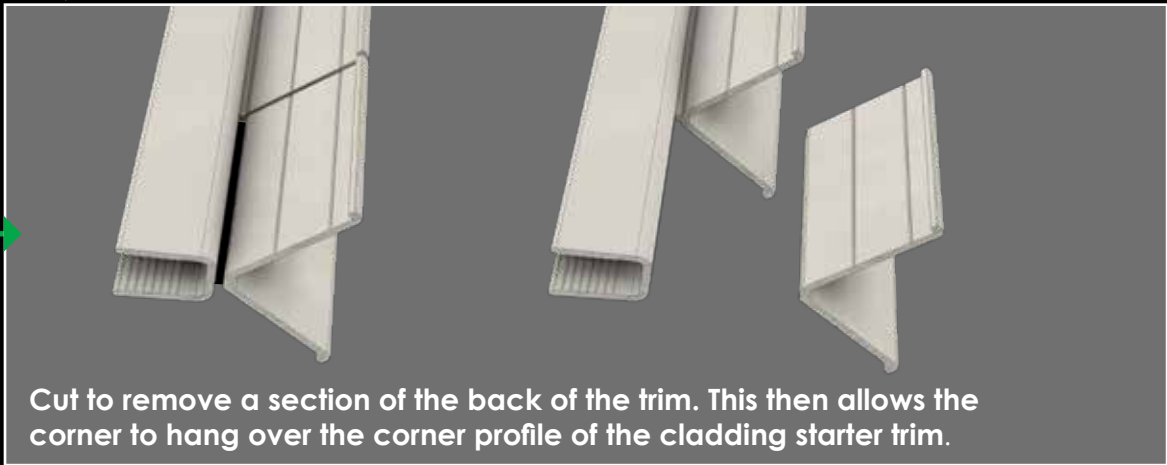


The gap between the EPDM Rubbercover and the Kerb Edge trim MUST be sealed using a suitable sealant.



Intergrating Cladding with Rubbercover Flat Roofs

For details of Rubbercover fitting instructions, please visit www.firestonebpe.com



Intergrating Cladding with Rubbercover Flat Roofs

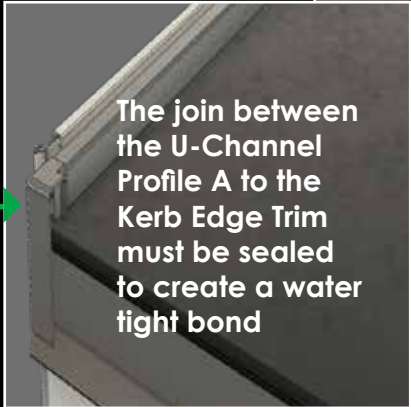
2 Part U-Channel profile A (kerb edge)



2 Part U-Channel

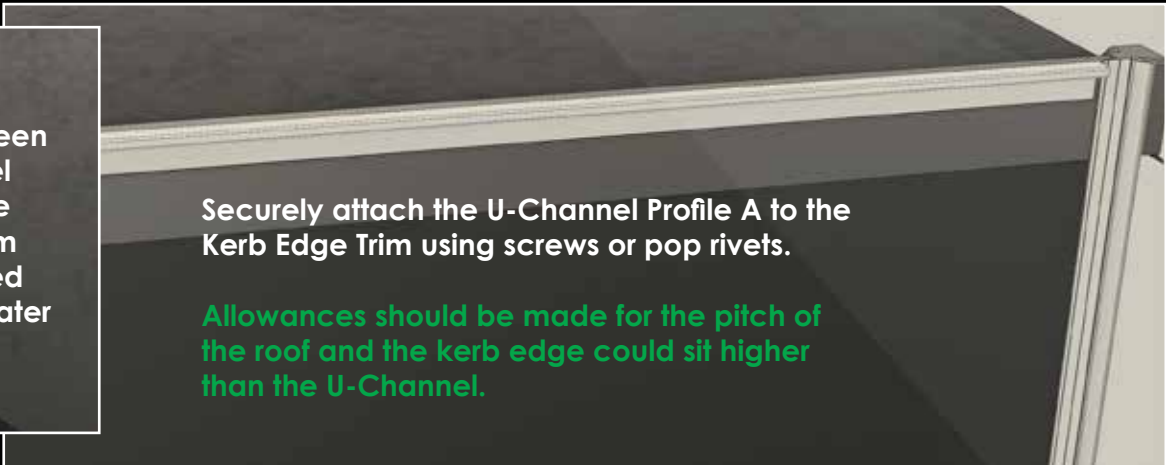


The join between the U-Channel Profile A to the Kerb Edge Trim must be sealed to create a water tight bond



Securely attach the U-Channel Profile A to the Kerb Edge Trim using screws or pop rivets.

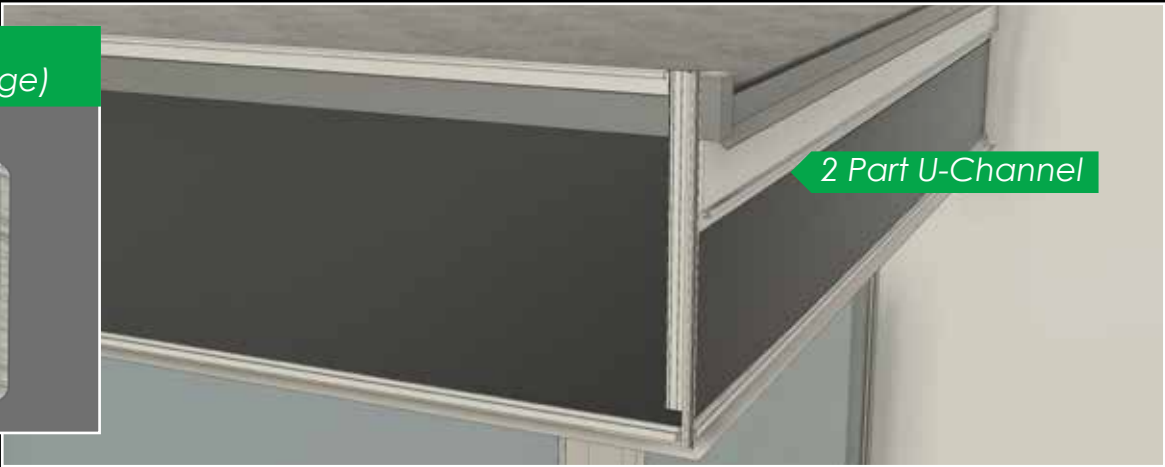
Allowances should be made for the pitch of the roof and the kerb edge could sit higher than the U-Channel.



2 Part U-Channel profile A (gutter edge)



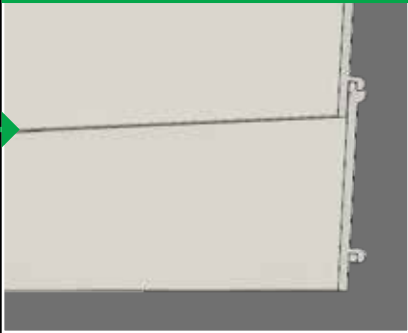
2 Part U-Channel



Securely attach the U-Channel Profile A underneath the Fascia Board leaving a 5mm gap so Profile B can clip in.



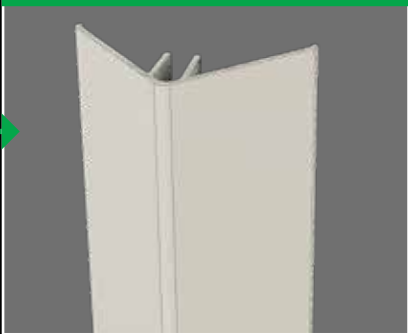
Cladding



Fix the cladding at 400mm centres starting from the bottom.



2 Part Corner Trim profile B

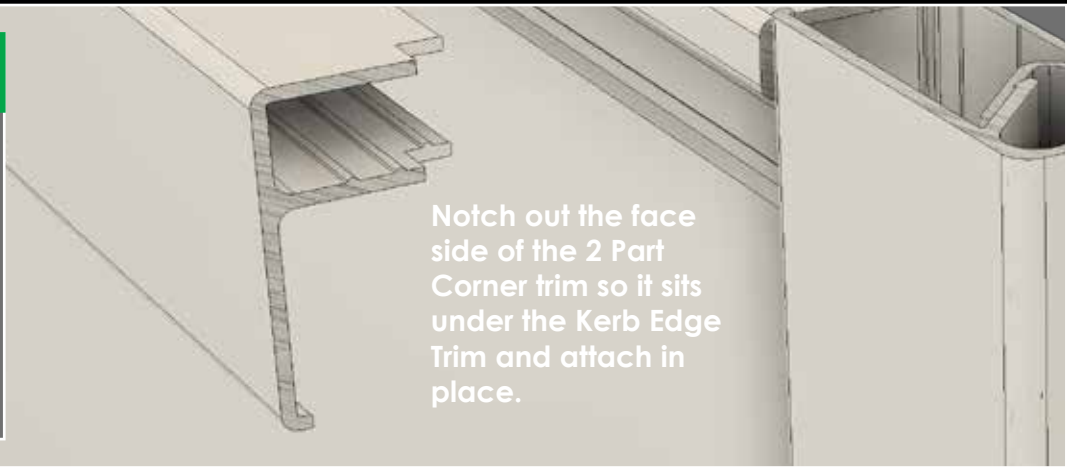


Notch out the face side of the 2 Part Corner trim so it sits under the Kerb Edge Trim and attach in place.



Intergrating Cladding with Rubbercover Flat Roofs

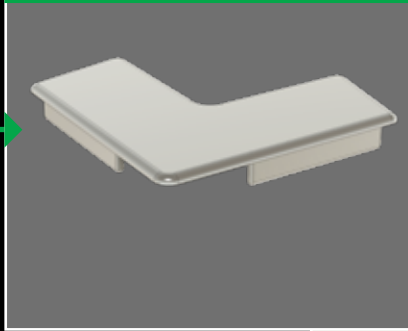
2 Part U-Channel
profile B



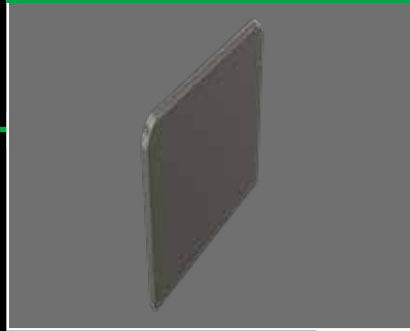
2 Part U-Channel
profile B



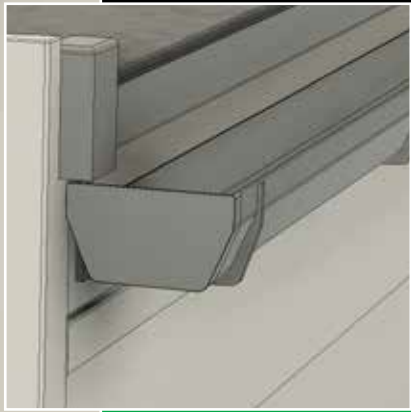
Top Cap



Kerb End Caps



Guttering





gap Ltd
Partnership Way
Shadsworth Business Park
Blackburn
BB1 2QP

T: 0845 313 10 12
F: 0845 313 03 13
W: gap.uk.com
S: @GAPLtd

General All-Purpose Plastics Ltd, T/A GAP Ltd
Registered No: 02767596

All photographs, images and colours are to be considered as representations only. Fitting instructions are intended as a guideline only as every installation may be different. GAP reserves the right to change specification at any time. GCCIG 10/19. V1.1